

**OPERATING INSTRUCTIONS AND PARTS LIST
INSTRUCTIONS D'UTILISATION ET LISTE DE PIÈCES
INSTRUCCIONES DE OPERACIÓN Y LISTA DE PIEZAS**



TM-75 Tile Saw

FELKER®

17400 West 119th Street

Olathe, Kansas 66061

Customer Service800-365-4003

Corp. Office913-928-1000

Cust. Service FAX.....800-825-0028

Corp. Office FAX913-438-7951

0AF04107

© Copyright, August 20, 2004,
Electrolux Construction Products



EVERY MACHINE IS THOROUGHLY TESTED BEFORE LEAVING THE FACTORY. EACH MACHINE IS SUPPLIED WITH A COPY OF THIS MANUAL. OPERATORS OF THIS EQUIPMENT MUST READ AND BE FAMILIAR WITH THE SAFETY WARNINGS. FAILURE TO OBEY WARNINGS MAY RESULT IN INJURY OR DEATH. FOLLOW INSTRUCTIONS STRICTLY TO ENSURE LONG SERVICE IN NORMAL OPERATION.

CONTENTS

Symbol Definitions	3 - 4
Decal Descriptions and Locations.....	5
Reference Figures.	6 - 7
Safety Warnings – DO's & DO NOT's	8 - 9
Instructions	
1. Features.....	10
2. Benefits	10
3. Machine Set-Up	11 - 12
4. Operating Procedures.....	12 - 13
5. Alignment Procedures	13
6. Maintenance.....	14
7. Trouble Shooting Guide.....	15
8. Repairs.....	15
9. Spare Parts	15
Diagrams and Spare Parts.....	16 - 17
Warranty	19



WARNING



HEARING HAZARD

DURING NORMAL USE OF THIS MACHINE, OPERATOR MAY BE EXPOSED TO A NOISE LEVEL EQUAL TO OR SUPERIOR TO **85 dB (A)**



ATTENZIONE!!!



RISCHIO DE LESIONE ALL'APPARATO Uditivo

NELLE NORMALI CONDIZIONI DI UTILIZZO,

QUESTA MACCHINA PUÒ COMPORTARE PER L'OPERATORE ADDETTO UN ESPOSIZIONE ACUSTICA DI LIVELLO PARI O SUPERIORE A

85 dB (A)



ATENCION



RIESGO DE DAÑO AUDITIVO

EN CONDICIONES NORMALES DE UTILIZACIÓN, EL OPERADOR DE ESTA MÁQUINA PUEDE ESTAR EXPUESTO A UN NIVEL DE RUIDO IGUAL O SUPERIOR A **85 dB (A)**



Symbols Definitions

Symboles

Definición De Simbolos



- Please read the instructions for use prior to operating the machine for the first time.
- Avant toute mise en service, lire attentivement la notice et se familiariser avec la machine.
- Antes de la puesta en marcha, lea detenidamente las instrucciones y familiarícese con la máquina.



- Mandatory
- Obligatoire
- Obligatorio



- Indication
- Indicazione
- Indicación



- Prohibition
- Interdiction
- Prohibición



- Warning Triangle
- Triangle d'avertissement
- Triángulo De Advertencia



- Wear Eye Protection
- Port obligatoire des lunettes de protection
- Usar Gafas De Protección



- Wear Breathing Protection
- Port obligatoire d'un masque respiratoire protecteur
- Usar Máscara De Protección



- The Use Of Ear Protection Is Mandatory
- Port obligatoire da casque antibruit
- Es Obligatorio El Uso De Protección Auditiva



- Wear Safety Shoes
- Port obligatoire des chaussures de sécurité
- Usar Zapatos De Seguridad



- Wear Appropriate Clothing
- Port obligatoire de la tenue appropriée
- Usar Ropa Adecuada



- Machinery Hazard, Keep Hands And Feet Clear
- Danger! Rester à distance de la machine
- Máquina Peligrosa - Mantenga Manos Y Pies Alejados De La Máquina



- No Non-Working Personnel In Area
- Zone interdite au personnel non-ouvrier
- Prohibido Para Personas Ajenas A La Obra



- Keep Work Area Clean/Well Lit, Remove All Safety Hazards
- La zone de travail doit toujours être propre, bien éclairée et ne présenter aucun risque
- Mantenga Limpio El Sitio De Trabajo/Bien Iluminado, Elimine Todos Los Riesgos De Seguridad



- Dangerously High Noise Level
- Niveau de bruit dangereux
- Nivel De Ruido Elevadamente Peligroso



- Repairs Are To Be Done By An Authorized Dealer Only
- Les réparations ne peuvent être exécutées que par un distributeur agréé
- Las Reparaciones Deben Ser Efectuadas Únicamente Por Un Distribuidor Autorizado



- Always Keep the Blade Guards In Place
- Toujours vérifier que les protections de disque sont bien en place
- Mantenga siempre las protecciones de la hoja en su sitio



- Diamond Blade
- Disque diamanté
- Sierra Diamantada



- Electrical Shock Hazard
- Risque de secousses électriques
- Peligro de sacudida eléctrica

DECAL DESCRIPTIONS & LOCATION AUTOCOLLANTS – DESCRIPTIONS ET EMPLACEMENTS DESCRIPCIÓN DE CALCAMONIAS Y UBICACIONES



P/N 185262
 Location: Tray - Front



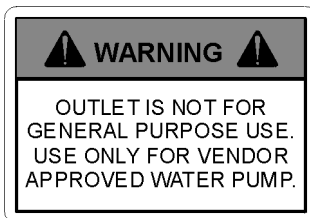
P/N 169866
 Location: Rip Guide



P/N 185263
 Location: Motor Cover - Front



P/N 185264
 Location: Blade Guard - Side



P/N 189247
 Location: Motor Cover - Rear



P/N 187043
 Location: Motor Cover - Top

REFERENCE FIGURES

FIGURES DE RÉFÉRENCE

FIGURA DE REFERENCIA

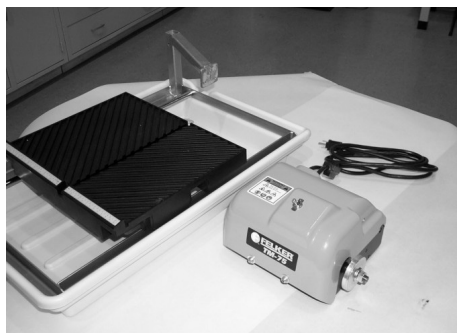


Fig 1



Fig 2



Fig 3



Fig 4



Fig 5



Fig 6

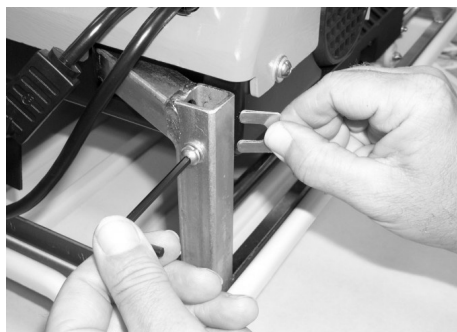


Fig 7



Fig 8



Fig 9



Fig 10



Fig 11



Fig 12

REFERENCE FIGURES

FIGURES DE RÉFÉRENCE

FIGURA DE REFERENCIA

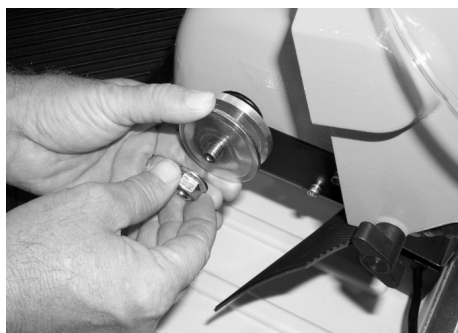


Fig 13



Fig 14



Fig 15

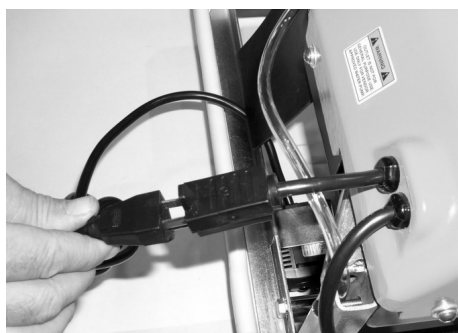


Fig 16



Fig 17



Fig 18



Fig 19



Fig 20



Fig 21



Fig 22
187076 90° Adjustable Protractor



Fig 23
187077 Dual 45° Angle Guide

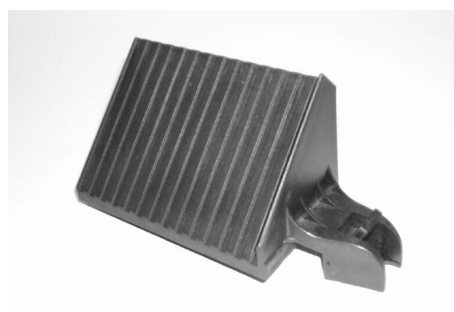


Fig 24
187078 Bull Nose Miter Guide

SAFETY FIRST!



WARNING: FAILURE TO COMPLY WITH THESE WARNINGS AND OPERATING INSTRUCTIONS COULD RESULT IN DEATH OR SERIOUS BODILY INJURY.

DO

- DO read this entire operator's manual before operating this machine. Understand all warnings, instructions, and controls.
- DO keep all guards in place and in good condition.
- DO wear safety approved hearing, eye, head and respiratory protection.
- DO read and understand all warnings and instructions on the machine.
- DO read and understand the symbol definitions contained in this manual.
- DO keep all parts of your body away from the blade.
- DO know how to stop the machine quickly in case of emergency.
- DO turn the "ON/OFF" switch to the "OFF" position prior to connecting the machine to the power source.
- DO inspect the blade, flanges and shafts for damage or dirt before installing the blade.
- DO always keep children away from this machine.
- DO use only blades marked with a maximum operating speed greater than the blade shaft speed.
- DO always use a ground fault circuit interrupter when wet sawing.
- DO read all safety materials and instructions that accompany any blade used with this machine.
- DO inspect each blade carefully before using it. If there are any signs of damage or unusual wear, **DO NOT USE THE BLADE.**
- DO mount the blade solidly and firmly. Wrench tighten the arbor nut.
- DO use the correct blade for the type of work being done. Check with blade manufacturer if you do not know if blade is correct.
- DO operate this machine only in well ventilated areas.
- DO establish a training program for all operators of this machine.
- DO clear the work area of unnecessary people. Never allow anyone to stand in front of or behind the blade while the motor is running.
- DO make sure the blade is not contacting anything before starting the motor.
- DO use caution when lifting and transporting this machine.
- DO always tie down the machine when transporting.
- DO use caution and follow instructions when setting up the machine.
- DO have all service performed by competent service personnel.
- DO make sure electric powered machines are plugged into a properly grounded circuit.
- DO make sure power cords are the proper size and in good condition.
- DO maintain a secure grip on the material being cut.
- DO verify the blade arbor hole matches the machine spindle before mounting the blade.
- DO clean the machine after each day's use.
- DO follow all electrical codes in your area.
- DO consider work area environment. Don't expose power tools to rain. Don't use power tools in wet locations.
- DO use caution to guard against electric shock. Prevent body contact with grounded surfaces (i.e., pipes, radiators, ranges, refrigerators).
- DO use correct voltage and proper extension cords. Never carry tool by cord or yank it to disconnect it from receptacle. Keep cord away from heat, oil and sharp edges.
- DO always carry the machine with the motor stopped and power cord disconnected.
- DO disconnect tools from power source when not in use, before servicing and when changing accessories.
- DO carefully maintain and clean for better and safer performance. Follow instructions for changing accessories. Inspect tool cords periodically and, if damaged, have repaired by authorized service facility.
- DO only cut in a straight line.
- DO always give a copy of this manual to the equipment user. If you need extra copies, call TOLL FREE 1-800-365-4003.

SAFETY FIRST!



WARNING: FAILURE TO COMPLY WITH THESE WARNINGS AND OPERATING INSTRUCTIONS COULD RESULT IN DEATH OR SERIOUS BODILY INJURY.

DO NOT

- DO NOT** operate this machine unless you have read and understood this operator's manual.
- DO NOT** operate this machine without the blade guard, or other protective guards in place.
- DO NOT** stand behind or in front of the blade path while the motor is running.
- DO NOT** leave this machine unattended while the motor is running.
- DO NOT** work on this machine while the motor is running.
- DO NOT** operate this machine when you are tired or fatigued.
- DO NOT** use a wet blade without adequate water supply to the blade.
- DO NOT** exceed maximum blade speed shown for each blade size. Excessive speed could result in blade breakage.
- DO NOT** operate the machine if you are uncertain of how to run the machine.
- DO NOT** use damaged equipment or blades.
- DO NOT** touch or try to stop a moving blade with your hand.
- DO NOT** cock, jam, wedge or twist the blade in a cut.
- DO NOT** use a blade that has been dropped or damaged.
- DO NOT** use carbide tipped blades.
- DO NOT** use abrasive blades.
- DO NOT** touch a dry cutting diamond blade immediately after use. These blades require several minutes to cool after each cut.
- DO NOT** use damaged or worn blade flanges.
- DO NOT** allow other persons to be near the machine when starting or when the machine is in operation.
- DO NOT** operate this machine in an enclosed area unless it is properly vented.
- DO NOT** operate this machine in the vicinity of anything that is flammable. Sparks could cause a fire or an explosion.
- DO NOT** allow blade exposure from the guard to be more than 180 degrees.
- DO NOT** operate this machine with the blade guard removed.
- DO NOT** operate this machine unless you are specifically trained to do so.
- DO NOT** use a blade that has been over heated (Core has a bluish color).
- DO NOT** jam material into the blade.
- DO NOT** grind on the side of the blade.
- DO NOT** lay power cords in or near the water.
- DO NOT** replace the motor with any motor that does not have a special grounding connection.
- DO NOT** stand or lean on machine.
- DO NOT** start cutting with a saw until you have a clear work area and secure footing.
- DO NOT** operate this machine while using drugs or alcohol.

This saw was designed for certain applications only. DO NOT modify this saw or use for any application other than for which it was designed. If you have any questions relative to its application, DO NOT use the saw until you have written Electrolux Construction Products and we have advised you.

**Electrolux Construction Products
17400 West 119th Street
Olathe, Kansas 66061
1-800-365-4003**



MANDATORY



INDICATION
INFORMATION
INSTRUCTION



WARNING

PROHIBITION

These signs will give
advise for your safety



*Before leaving our factory every machine
is thoroughly tested.*

Follow our instructions strictly and your machine
will give you long service in normal operating
conditions.

1. Features

Use: Sawing of tile materials.

Tools: Diamond blades --

(For information contact your **FELKER®** supplier)

Blade Capacity: Ø 8" (200 mm) – bore 5/8"
(15.9 mm).

Blade Rotation: Counter-Clockwise (CCW).

Cutting Thickness (material): 1 5/8" (41.2mm)

Cutting Diagonal @ 10" (254mm)

Cutting Length: 14" (356mm)

Blade Cooling: Water pump

Horsepower: 3/4

Voltage: 115 Volts, 60 Hertz, 1-Phase

Amperage: 4.2 amps

Blade Shaft RPM: (3300)

Weight lbs. (kg.): 36.5 (16.5)

Dimensions (L x W x H): 26" x 16.5" x 14"
(660 x 419 x 356mm)

Pan Holding Capacity: 9.3 quarts (8 liters)



*Before starting up the machine, make sure
you read this entire manual and are familiar
with the operation of this machine.*



*The working area must be completely clear,
well lit and all safety hazards removed.*



*The operator must
wear protective
clothing appropriate
to the work he is
doing.*



*Any persons not involved in the work
should leave the area.*



*Use only blades marked with a maximum
speed greater than the blade shaft
speed.*

2. Benefits

Your **FELKER®** tile saw is a ruggedly constructed unit
engineered to give long, satisfactory performance.
Simple, daily maintenance and care will add to the life
and productivity of your tile saw.

- Light weight for easy maneuverability and maintenance.
- Has a durable polymer cutting table – able to handle almost any cutting job due to its reinforced construction.
- Cutting table designed to drain water quickly back into the water tray for efficient recycling of water.
- Cast blade guard with hinge to allow easy removal of cutting blade.
- Cutting table runs on nylon wheels for smooth and accurate cuts and easy maintenance.
- Water tray of durable polymer construction to resist rust and to drain water and sediment much faster.

3. Machine Set-Up



Follow all of the assembly and installation instructions completely before connecting this saw to a power source.

UNPACKING

(Fig's. 1, 2 & 3)

Carefully open the container and remove all the saw components and packing materials. Be certain you have checked each item with the checklist below before discarding the container or the packing materials. The contents are as follows:

- | | |
|-----------------------|---------------------------|
| 1. Operator's Manual | 6. Cutting Guides (4) |
| 2. Durable Water Tray | 7. Water Pump w/ Hose |
| 3. Saw Frame w/Cart | 8. Blade - 8" [200 mm] |
| 4. Power Head | 9. Misc. Tools & Hardware |
| 5. Blade Guard | |

NOTE: IF ANY OF THE PARTS ARE MISSING OR DAMAGED PLEASE CONTACT YOUR FELKER CUSTOMER SERVICE FOR INSTRUCTIONS. CALL 1-800-365-4003

ASSEMBLY

- Assembly Tools required:
 - four wrenches supplied (2 allen type)
- Place saw frame with cart into water tray. (Fig 4)
- Feed the powerhead assembly onto the arm of the saw frame through the opening in the back of the powerhead. (Fig 5)
- Align the three holes in the powerhead with the three threaded holes in the saw frame arm and install the M5 x 10mm capscrews and lock washers. (Fig 6)
- Loosely Install the M6 x 40mm capscrew and washers at the rear of the saw frame. Insert just enough brass spacers to fill any gap between the saw frame and the powerhead, and then fully tighten the capscrew. Not using spacers can adversely affect alignment. (Fig 7)
- Install blade guard onto the powerhead with supplied knob. (Fig 8)

WATER PUMP INSTALLATION

- Remove the water pump from its packaging and check it to be sure it is not cracked or damaged in any way.
- Route the 8mm plastic tubing as shown. (Fig 9)
- Attach the ends of the 8mm plastic tubing to the blade guard and to the water pump. (Fig 10 & 11)
- Place the water pump in the rear of the water tray and set in place using the mounting bracket as shown. (Fig 12)
- Keep the power cord out of the water and plug into the motor pigtail three-pronged outlet. (Fig 16)

WATER PUMP SAFETY GUIDELINES AND MAINTENANCE.



Always plug the saw power cord into a GFCI outlet when using. If a GFCI type outlet is not available, use a plug-in type GFCI plugged into a properly grounded outlet. Do not use any temporary plug adapters.

- The water pump is equipped with a ground electrical plug, to reduce the risk of possible shock. Be sure to connect to a properly grounded type receptacle.
- Never pick the water pump up out of the water when it is plugged in.
- **DO NOT EVER** use the water pump to pump anything but water.
- Never service the pump when it is still plugged in.
- Never let the pump operate dry. It is self-cooled by pumping water. Dry use will cause the pump to fail.
- Maintain regularly and clean out debris from intake screen.
- Check the power cord for nicks or frays and never try to alter the power cord in any way.

FITTING OR CHANGING THE BLADE



BLADE INSTALLATION AND REMOVAL (Fig 13-15)

- Turn motor switch off.
- Disconnect power cord.
- Carefully raise the blade guard to its highest position and tighten the adjustment knob on the rear support, so as to put firmly in place.
- Then remove the blade shaft nut and the outer flange. (Fig 13) Use the 5mm allen wrench to hold the shaft and the box end wrench to turn the nut counter-clockwise. (Fig 15)
- Place blade onto the shaft, pushing it up against the inner flange. Make sure the blade is mounted with the directional arrow pointing counter-clockwise. (Fig 14)
- Next replace the outer flange and shaft-nut and tighten down. (Fig 14, 15) **Do not over-tighten.**
- Next lower the blade guard back into position and tighten the knob.



Pay attention to the direction of rotation shown by the arrow on one side of the Blade (rotation in the opposite direction to the tightening of the nut). Blade should rotate counter-clockwise when facing the bladeshaft nut.



Make sure that the supporting surfaces of the Blade, the Flanges and the arbor are clean.

ELECTRICAL CONNECTIONS

- Use a grounded circuit.
- Use a GFCI when wet sawing.
- Use the correct plug and outlet.
- Check that the main voltage is identical to that of the machine.
- Extension cord: Use the correct size extension cord. Be certain that the cord is in good service condition.
 - If, on position 1 (on), motor does not run:
 - check the electric power on the site (fuses, cutouts, sockets, etc);
 - check the extension being used (faulty connection, wire break)
 - check power cable, it's connection;
 - check the operation of the on-off switch.



Before any examination, unplug the machines power cord.

4. Operating Procedures



- **Always be very careful.**
- **Find a comfortable, well-balanced position.**
- **Always keep protective casing in place while working.**

- Place the machine on a dry surface or the optional stand.
- Fill the holding tank with clean water [holds 9.3 quarts (8 liters)].
- Plug the machine into the power outlet and turn the motor switch to the on position.

CUTTING TABLE

THE CUTTING TABLE IS MARKED IN INCHES AND MILLIMETERS TO MAKE YOUR DIMENSIONAL CUTS ACCURATE.

STEPS FOR POSITIONING THE 90 DEGREE RIP

- Slide the rip guide onto the table backstop from one end. (Fig 17)
- Set the rip guide by positioning it at the desired point on the front end of the cutting table front lip and flipping down the thumb lock until the rip guide is firmly locked in place. (Fig 18) Note that the thumb lock will hold accessory firmly in place without using the full travel of the thumb lock.

Additional movement is designed for any long term wearing that may be experienced. Unnecessary clamping with the thumb lock could raise the end of the accessory up off the table surface.

- The rip guide can be used for straight 90° cuts from both the left and right sides.
- After the rip guide is positioned for the desired cut, place material flush against the rip guide and the measurement rail.
- Now you are ready to make your cut.

CUTTING DEPTH

The 8" (200mm) blade capacity yields a cutting depth of 1 5/8" (41,2mm).



After completing any work, switch off the machine. There is no point in leaving the motor running and the blade turning.

QUICK TIPS FOR WATER PUMP OPERATION

If you are having trouble getting water flow properly through the water pump, try this:

- First, check to see that the pump is fully submerged in water. Fill the water tray with clean water to completely cover the pump.
- Second, check to see if all tubing is connected to the pump correctly and its feeds are properly attached.

Sometimes the tubing is not pushed far enough into its attachment, allowing water to escape at the attachment point. Simply push tubing firmly into fitting until it stops and will not pull back out.

- Third, if there is a problem getting water to flow out properly, check the water control valve setting on the front of the pump. It can be adjusted from "Min" to "Max" (Fig 19)

Often times the water control valve is set to "Min" and is not capable of pumping enough water when first turned on. This is easily corrected by turning the valve to "Max" and then adjusting to the desired water flow.

- Fourth, if problems still persist, there is also a chance that debris or sediment is clogging the water pump intake screen, the pump impeller or inside the tubing.
 - Clearing these areas with fresh water can alleviate the clogging. The build up sediment needs to be cleaned from the bottom of the Water Tray and the intake screen cleaned. Fill tray with fresh water.
 - With pump intake removed, look inside the area impeller and check for debris. Clean as needed with fresh water. (Fig 20)
 - If the tubing is clogged, remove ends from the water pump and Blade guard fitting. Flush with fresh water until all debris is removed and reconnect tubing. (Fig 10 & 11)

WATER TUBING REMOVAL (Fig's 10, 11)

Plastic tubing connects the water pump to the blade guard. The fittings used to connect this tubing seal and grip the outside diameter of the tubing. Special internal locking fingers attached to the flanged collet hold the tubing fast. To clean the water tubing requires the tubing to be removed from the fittings. To release the tubing from the fitting, fully depress the collet before pulling the tube out of the fitting. When you press down on the collet you are opening the locking fingers and freeing the tubing to be easily removed.

WATER TRAY REMOVAL AND INSTALLATION THE REMOVAL AND INSTALLATION OF THE WATER TRAY IS EASY.

- First turn off the saw and unplug the power cord. Do the same for the water pump.
- Then remove water pump from tray.
- Then take frame and motor assembly out of the water tray.
- Take tray and drain water and contents (sediment)
- To install simply reverse this process.

NOTE: THERE ARE NO ADJUSTMENTS TO WATER TRAY

5. Alignment Procedures

Your **TM-75** tile saw is factory assembled and aligned prior to shipment to ensure accurate cuts when your saw is delivered. However, since **FELKER**® cannot control rough handling during shipping, it is suggested that the alignment be checked. If the saw is found in need of adjustment, refer to the appropriate section(s) below.

There are two basic **TM-75** alignment checks. Any adjustments made must follow these procedures to ensure that the unit functions freely.

Adjustment tools required: Carpenter's Square and the small open-end wrench provided with your new saw. (Fig 3)

1. Check the Blade in Slot Alignment

- The blade should be centered in the conveyor cart slot.
- Set-up your saw as described above, move the conveyor cart back and forth from the front to the rear of the pan. If the blade contacts either side of the slot, the Cart Slot Location Adjustment must be performed.

Cart Slot Location Adjustment (See Parts List, Diagram 1)

- Move the Conveyor Cart so the Blade is approximately midway between the front and back of Cart. Loosen the three (3) Roller Guide fasteners (Items 6 & 8) with the supplied wrench. Move the Adjustment Clamp (item 4), Roller Guide Bar (item 3) and Cart together until the blade is centered in the slot. Tighten

the fasteners. It is recommended that the Parallel Alignment in step 2 be checked to insure the best quality cuts.

2. Check the Parallel Alignment

- The conveyor cart should travel parallel to the plane of the blade.
- Place a square rule against the backstop, lightly in contact with the blade. The blade surface should be parallel to the square; e.g., no gap between the blade and the square at either the front or back edge of the blade. Next, holding the square firmly traverse the cart fore and aft. The blade should remain parallel to the square, staying slightly in contact with it throughout its full travel. If the blade does not stay in contact with the square, the Parallel Alignment must be performed.

Parallel Alignment (See Parts List, Diagram 1 & Fig 21)

- Loosen the front two Roller Guide fasteners (Item 6 & 8). Move the Roller Guide Bar (item 3) and Cart by the Adjustment Clamp (item 4) until the square is flush with the blade. Tighten the fasteners and recheck the alignment again. The cart should now travel parallel to the blade and the blade should be centered in the slot.

6. Maintenance



Before performing any maintenance, **ALWAYS** place the machine on a level surface with the motor **OFF** and disconnect the electrical current. Let the machine cool down!!

FOR LONGEST LIFE AND BEST PERFORMANCE

- Always clean the saw after every use.
- Wipe all of the exterior sediment or dirt off the motor. **Never spray water directly onto the motor!**
- Wipe all exterior surfaces and keep the cutting table clean and free of all debris.
- Wipe the roller guide bar on the frame.
- Always check the blade for cracks or signs of damage.

OPTIONAL ACCESSORIES

Folding Stand:

- #187073 Stand with wheels



Store in a safe place, out of reach of children.
Maintain all tools carefully.

7. Trouble Shooting Guide

SAW WON'T START, SAW IS TOO SLOW TO START, SAW MOTOR MAKES HUMMING NOISE

- Make sure plug is in live electrical circuit.
- Voltage from source may be too low.

SAW SHUTS OFF ABRUPTLY

- Power is interrupted, check power source and restart the saw.
- Voltage from source may be too low. Check for low voltage.

WATER PUMP SYSTEM WON'T START OR STOPS ABRUPTLY

- Check to see that pump is plugged in and is connected to plastic tubing.
- Check to see if pump is completely submerged.
- Check to see if the water pump is clean and free of any chips, debris, clogging, etc.

SAW WON'T CUT STRAIGHT

- Check to see if saw frame or rolling guide bar is bent.
- Check to see if the support for the cutting table is bent.
- Check for possible defective blade.
- Materials may have been pushed or forced through the cut. Let blade pull material for a clean cut.
- Check cart tracking adjustment.

SAW BLADE DOESN'T CUT WELL

- Blade needs to be dressed.
- Blade may be mounted on saw backwards.
- Blade may be worn or damaged.
- Blades life may be used up (old blade)



The manufacturer accepts no responsibility caused by unsuitable use or modifications. At the workstation, the sound pressure level may exceed 85 dB (A). In this case hearing protection must be worn.

8. Repairs



Entrust all repairs to your authorized dealer only.

We carry out all repairs in the shortest possible time and at the most economical prices. (See front page for our address and phone numbers) Contact your authorized **FELKER®** dealer concerning maintenance and repairs.

9. Spare Parts

For quick supply of spare parts and to avoid any lost time, it is essential to quote the data on the manufacturer's plate fixed to the side of the motor and the part number(s) and description to be replaced with every order.

The instructions for use and spare parts found in this document are for information only and are not binding. As part of our product quality improvement policy, we reserve the right to make any and all technical modifications without prior notice.



The manufacturer accepts no responsibility caused by unsuitable use or modifications.

DIAGRAM 1

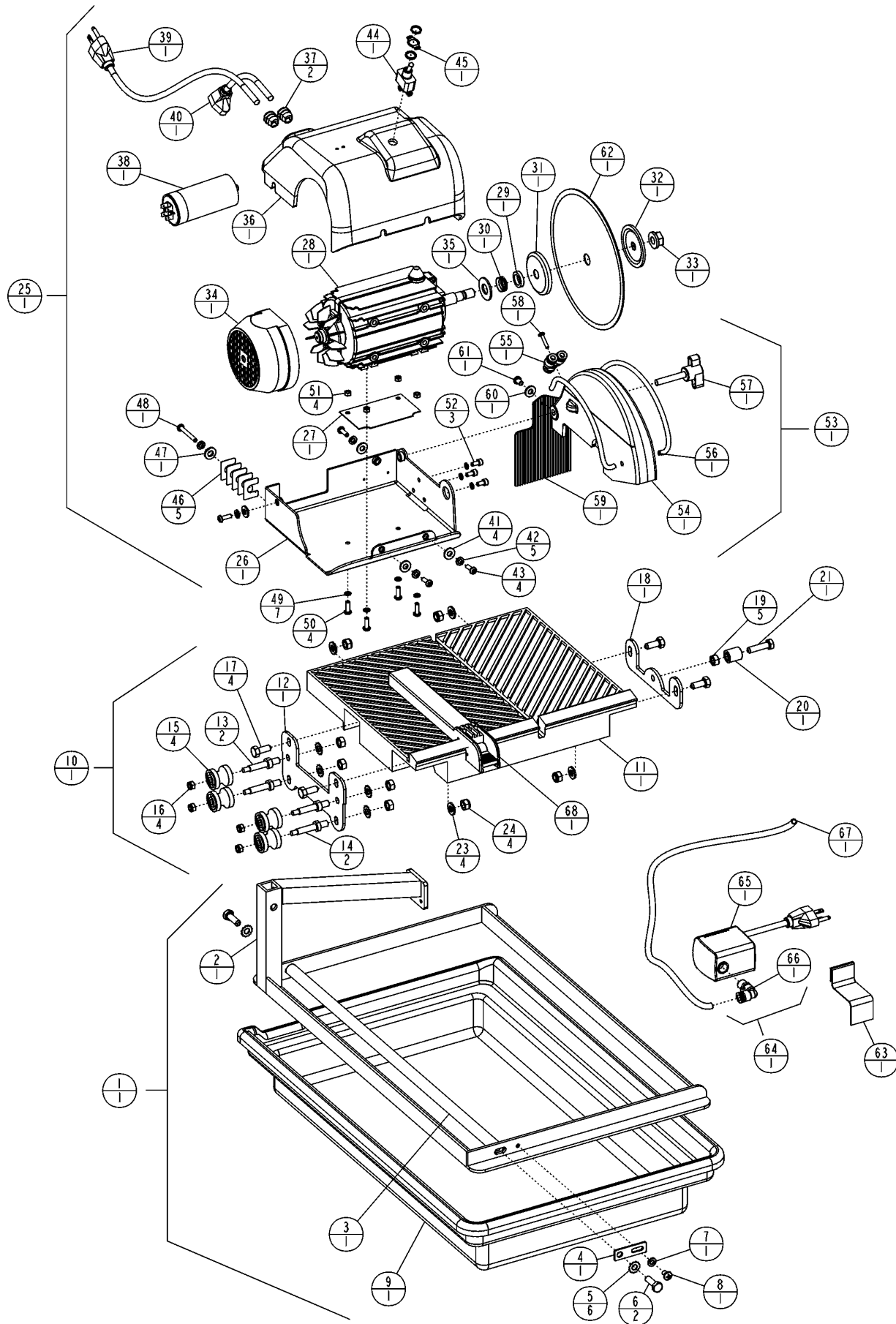


DIAGRAM 1 --- TM-75 PARTS LIST

Loc	P/N	Description	Qty	Loc	P/N	Description	Qty
1	185108	Frame Assy (incl. 2-8)	1	53	185243	Assy, Blade Guard (incl. 54-61)	1
2	185106	Frame	1	54	185241	Guard, Blade 8in - Machined	1
3	185107	Bar, Roller Guide	1	55	185150	Adaptor - Y Water Tube	1
4	185159	Clamp, Roller Bar Adj.	1	56	185257	Tube, Water 6 x 4 x 280mm	2
5	173019	Lockwasher, External Tooth, M8	2	57	185140	Knob, M8 x 45	1
6	167478	Capscrew, Hex Hd M8 x 1.25 x 25mm	2	58	185141	Screw, M4 x 20mm	1
7	139746	Washer, Flat M6	1	59	185244	Flap, Splash	1
8	185255	Screw, Mach Pan Hd M6 x 1.0 x 10mm	1	60	020762	Washer, Flat .250 SAE	1
9	185111	Water Tray	1	61	185251	Capscrew, Soc Bt Hd M6 x 1.0 x 10mm SS	1
10	185130	Assy, Cutting Table (incl. 11-24)	1	62	185237	Blade, 8in (200mm) Cont Rim	1
11	185136	Cutting Table	1	63	185160	Bracket, Pump Mounting	1
12	185125	Bracket, U Roller	1	64	185132	Assy, Water Pump (incl. 65-66)	1
13	185126	Stud, Upper U Roller	2	65	185146	Water Pump 115V/60Hz	1
14	185127	Stud, Lower U Roller	2	66	185158	Adaptor, 90° Tube - Water Pump	1
15	185137	Roller, U Shaped Nylon	4	67	185201	Tube, Water 8 x 6 x 600mm	1
16	139745	Locknut, Fiber M6 x 1.0	4	68	169887	Guide, Rip - Plain	1
17	139737	Capscrew, Hex Hd M8 x 1.25 x 20mm	4				
18	185129	Bracket, Single Roller	1				
19	172027	Nut, Hex Hd M8 x 1.25	5				
20	185138	Roller, Right Side Nylon	1				
21	185131	Stud, Single Roller	1				
22	173019	Lockwasher, External Tooth, M8	4				
23	173059	Washer, Flat M8	4				
24	139738	Locknut, Fiber M8 x 1.25	4				
25	185245	Assy, Power Head w/ Guard (incl. 26-53)	1				
26	185235	Bracket, Motor Base Wldmnt	1				
27	185260	Plate, Spacer	1				
28	185221	Motor Assy, 3/4HP 4.2A 115V (incl. 29-35)	1				
29	185216	Spacer Sleeve (Before S/N 417841)	1				
		(See Note 1)					
30	185215	Seal, Shaft (Before S/N 417841)	1				
		(See Note 1)					
31	185218	Flange, Inner (Before S/N 417841)	1				
		(See Note 1)					
--	542190504	Flange, Inner (S/N 417841 & Later)	1				
		(See Note 1)					
32	185219	Outer Flange	1				
33	185220	Nut, Arbor M12	1				
34	185248	Cover, Fan	1				
35	185274	Slinger, Shaft	1				
36	185239	Cover, Motor - Machined	1				
37	185238	Bushing, Strain Relief	2				
38	185214	Capacitor	1				
39	185246	Cord, 16/3 SJTW w/ Male Plug	1				
40	185247	Cord, 16/3 SJTW w/ Female Plug	1				
41	020762	Washer, Flat .250 SAE	4				
42	163689	Lockwasher, Split M6	5				
43	185252	Capscrew, Soc Bt Hd M6 x 1.0 x 16mm SS	4				
44	185253	Switch, Toggle 3/4hp	1				
45	090552	Plate, Switch	1				
46	032503	Shim, Brass .020	5				
47	173059	Washer, Flat M8	1				
48	185258	Capscrew, Soc Bt Hd M6 x 1.0 x 40mm SS	1				
49	020782	Lockwasher, Split #10	7				
50	185259	Capscrew, Soc Bt Hd M5 x 0.8 x 16mm SS	4				
51	172011	Nut, Hex Hd M5 x 0.80	4				
52	174432	Capscrew, Soc Hd M5 x 0.8 x 10mm	3				

---- Items Not Shown ----			
P/N	Description	Qty	
169866	Decal, Felker Rip Guide	1	
185262	Decal, TM-75 Pan	1	
185263	Decal, TM-75 Motor Cover	1	
185264	Decal, Felker 8" [200mm] Guard	1	
187043	Decal, Warning	1	
189247	Decal, Water Pump Outlet	1	
192001	Wrench, Allen 4mm	1	
185233	Wrench, Allen 5mm	1	
185145	Wrench, Open [17 x 13]	1	
185272	Wrench, Box/Open [18 x 10]	1	
187076	90° Adjustable Protractor	1	
187077	Dual 45° Angle Guide	1	
187078	Bull Nose Miter Guide	1	

Note 1: Effective with Tile Saw Serial Number 417841 (Built August 16, 2004):

Inner Flange, P/N 542190504 Replaced Inner Flange, P/N 185218, Spacer, P/N 185216, and Seal, P/N 185215.

Outer Flange, P/N 542190504 can be used for units before Serial Number 417841, but Inner Flange (185218), Spacer (185216), and Seal (185215) must be removed and discarded.

NOTES:

Felker's New Equipment Warranty

Except as noted below. Felker warrants that its new equipment will be free from manufacturing defects for a period of two (2) years from date of purchase by the original consumer purchaser.

The above warranty is subject to the following new equipment exceptions:

1. The warranty time period for the following new equipment is limited as follows:

TM-75™, FTS-150, FRS-30, FRS-38, FRS-51 --- One (1) year

FTS-70™, Little Jack, Jack Junior and Slammer Jack tools --- Six (6) months

FTS-50™ --- Ninety (90) days

2. To the extent the following components are part of any the new equipment, Felker's warranty on the component parts is limited to the manufacturer's warranty period set out below:

Manufacturer.....Warranty Period GAS and DIESEL ENGINES

Briggs & Stratton.....2 years

Koler Gas.....2 years

Robin Gas.....2 yrs./2,000 hrs.

Honda Gas.....2 years

Wiscinsin Gas.....1 year/2,000 hrs.

Hatz Diesel.....1 year

Manufacturer.....Warranty Period ELECTRIC MOTORS

Baldor.....1 year

Leeson.....1 year

Bosch.....6 months

Milwaukee.....Lifetime

Black & Decker.....1 year

DM100.....6 months

AIR MOTORS and VAC. PUMPS

Gast.....1 year

Manufacturer.....Warranty Period TRANSMISSIONS

Eaton.....3 years*

Sunstrand.....3 yrs./1,000 hrs.*

(* from date of manufacture)

HYDRAULIC PUMPS

Fenner-Stone.....1 year

John S. Barnes Co.....1 year

WATER PUMPS

Jasbsco.....1 year

Beckett.....1 year

3. Felker's obligation under this warranty is expressly limited to the replacement or repair at Felker, Olathe, KS 66061, or at a service facility designated by Felker, of such parts as inspection shall disclose to have been defective. This warranty does not cover labor, except for gas powered Quickie Super saws and does not cover maintenance items such as belts, air filters, bearings and wheels. Purchaser will be responsible for paying for shipping costs to and from the location where the equipment is to be repaired or replaced. Motors and engines are to be serviced by the nearest factory authorized service center. These service centers are designated by the manufacturer of the engine/motor. **Under no circumstances will Felker be responsible for incidental or consequential damages.**

4. Felker's warranty does not apply to defects caused by damage, abuse, modifications, low voltage, acts of God, unreasonable use, faulty repairs made by others or defects caused by failure to provide reasonable maintenance. All warranties are void if the equipment or any of its components are altered or modified by the purchaser, or of the product is used in a manner or with a blade not recommended by the manufacturer.

5. The forgoing express warranties are in lieu of all other warranties. **FELKER EXPRESSLY DISCLAIMS ALL OTHER WARRANTIES, INCLUDING, WITHOUT LIMITATION, THE IMPLIED WARRANTIES OF MERCHANTABILITY AND FITNESS FOR A PARTICULAR PURPOSE.**

Please record the Date of Purchase and the Serial Number of your saw in the space below. (The serial number is located on the side of the motor.) When ordering service items, please have this information available.

Serial Number:		Date of Purchase:	
Model Number:		Where Purchased:	

For any missing, damaged or service items needed, DO NOT return to original store of purchase, instead contact:

FELKER CUSTOMER SERVICE

Cust. Service Phone.....1-800-365-4003

Cust. Service FAX.....1-800-825-0028

**Felker Corporate Office**

17400 West 119th Street

Olathe, Kansas 66061

Customer Service800-365-4003

Corporate Office913-928-1000

Customer Service FAX800-825-0028

Corporate Office FAX913-438-7951

Customer Service, Int'l.....913-928-1258

www.felkersaws.com

**Felker Latin America, Mexico, Caribbean,
Central and South America**

17400 West 119th Street

Olathe, Kansas 66061

Phone913-928-1255

FAX.....913-438-7938

Felker Canada

17400 West 119th Street

Olathe, Kansas 66061

Customer Service800-365-4003

Customer Service FAX800-825-0028